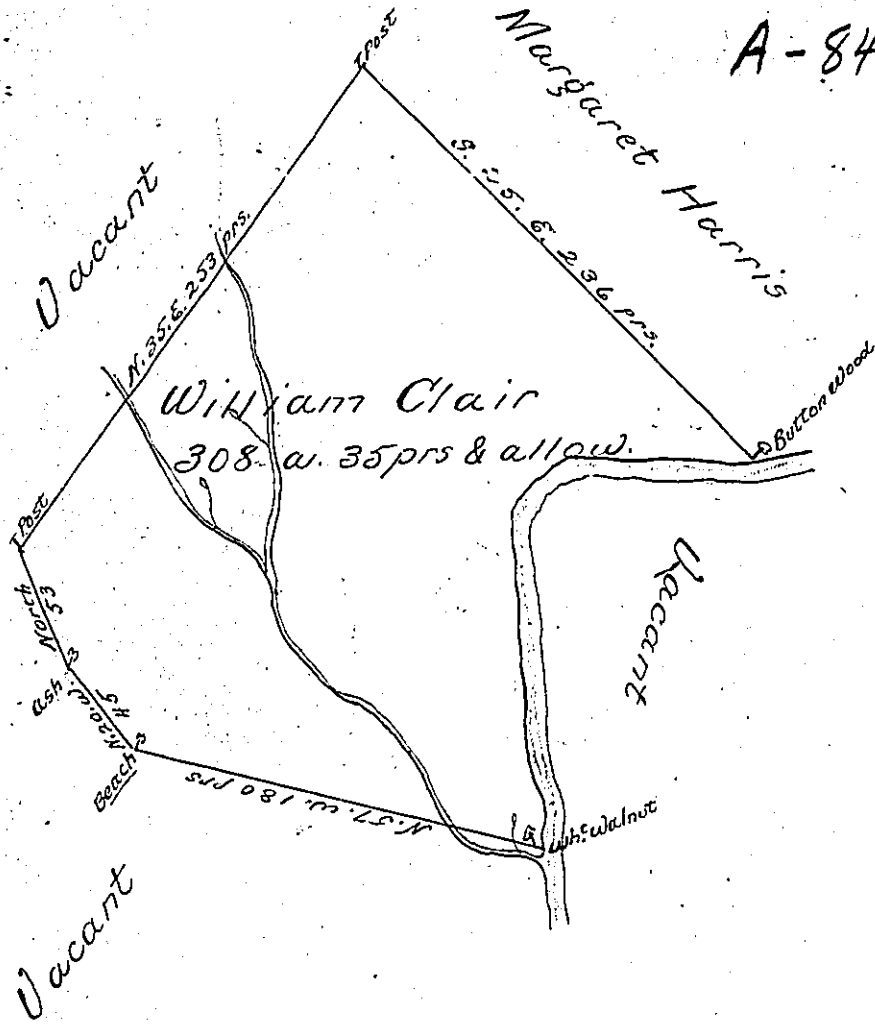


A-84-299



A Draught of a tract of Land called _____
 situate and lying on Royalsock Creek in the County of
 Northumberland containing 308 a 35 pps with the allow-
 ance of Six pbs. for roads &c. Surveyed the 22^d. day of June
 1776 by Virtue of A warrant bearing date the 25th. day of
 February 1773

John Lukens Esqr. }
 Surveyor General }
 Jo. J. Wallis U.S.

IN TESTIMONY that the above is a copy of the original remaining on file in
 the Department of Internal Affairs of Pennsylvania, made
 conformably to an Act of Assembly approved the 16th day of
 February, 1833, I have hereunto set my Hand and caused
 the Seal of said Department to be affixed at Harrisburg,
 this third day of December 1901

James W. Lusk
 Secretary of Internal Affairs.